



MONTHLY MEMBERSHIP PROGRESS REPORT

Results as of: 9/30/2015

Multiple District 26

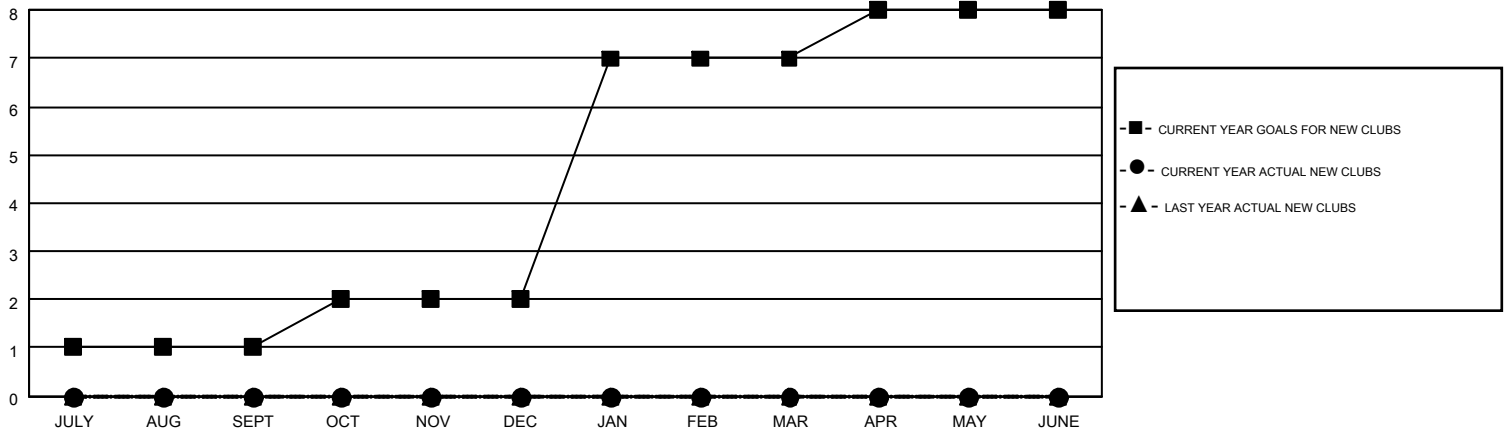
LOCATION: MISSOURI

GMT: HAL GRIFFIN

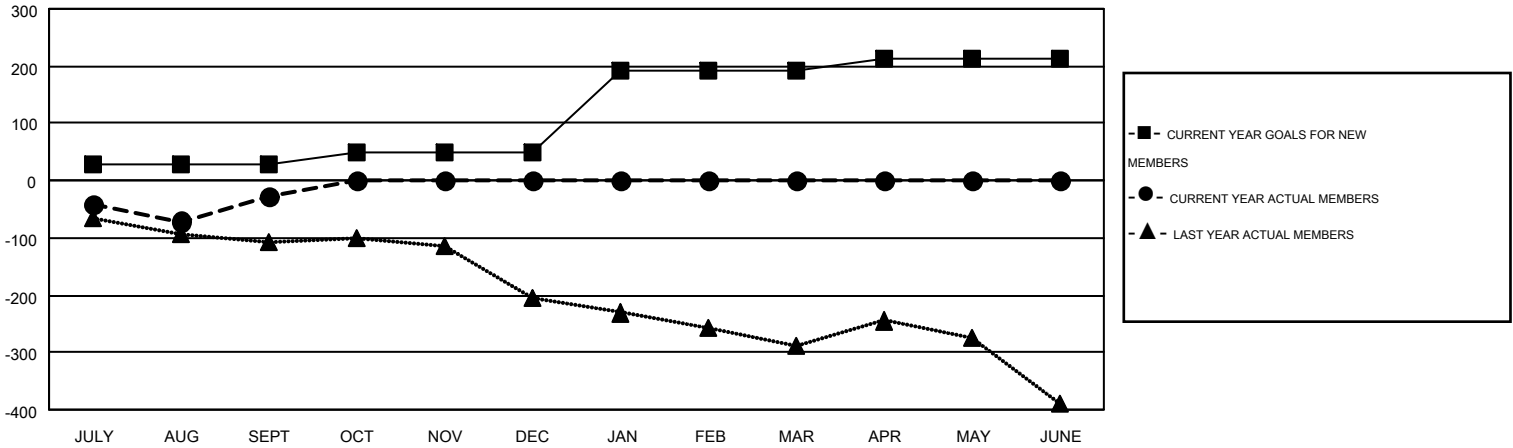
GMT CA 1

Clubs					Members				
RESULTS FOR 2015-2016					RESULTS FOR 2015-2016				
QUARTER	NEW CLUB GOAL	NEW CLUBS	DROPPED CLUBS	NET GAIN/LOSS	QUARTER	NEW MEMBER GOAL	CHARTER AND NEW MEMBERS ADDED	DROPPED MEMBERS	NET GAIN/LOSS
JULY/AUG/SEPT	1	0	3	-3	JULY/AUG/SEPT	29	233	261	-28
OCT/NOV/DEC	1	0	0	0	OCT/NOV/DEC	21	0	0	0
JAN/FEB/MAR	5	0	0	0	JAN/FEB/MAR	143	0	0	0
APR/MAY/JUNE	1	0	0	0	APR/MAY/JUNE	19	0	0	0

GOALS AND ACTUAL NEW CLUBS CUMULATIVE



GOALS AND ACTUAL MEMBERS CUMULATIVE



DROPPED CLUBS: 3	99 CLUBS OF 350 ADDED 1 OR MORE NEW MEMBERS	<u>GENDER DISTRIBUTION</u>	
		MALE	7,018 (75.67%)
<u>DROPPED MEMBERS</u>		FEMALE	2,256 (24.33%)
DECEASED	25	CLICK HERE FOR HEALTH ASSESSMENT DATA	
CLUB CANCELLED	0		
OTHER	236		
TOTAL	261	FAMILY UNIT MEMBERS	1,518
		HEAD OF HOUSEHOLD	741
		NON-HEAD OF HOUSEHOLD	777